

Electromagnetic Spectrum

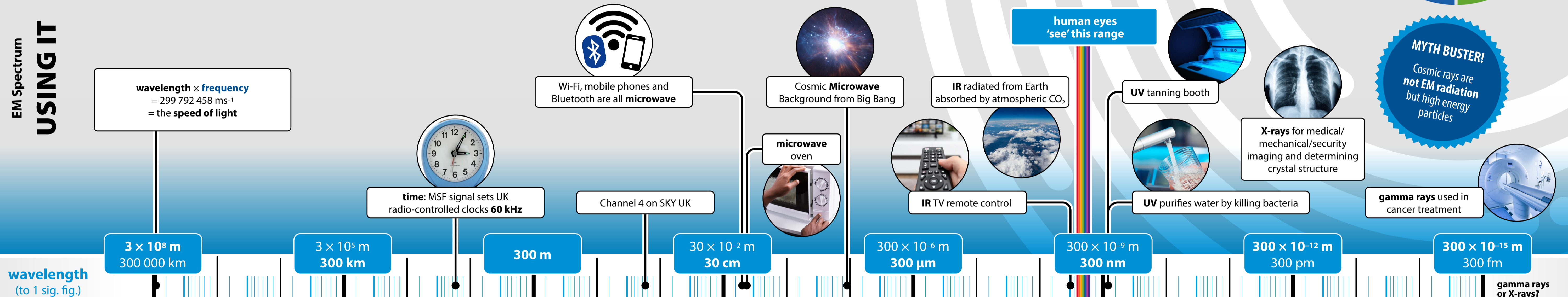
Electromagnetic (EM) waves carry energy and comprise transverse vibrations in electric and magnetic fields, not vibrating particles. They can travel through empty space (vacuum), without requiring any material to carry them. In vacuum, all EM waves travel at $299\,792\,458\text{ ms}^{-1}$ (the fastest possible speed). When passing through matter (e.g. air or glass), speed is reduced, though seldom less than half that when moving in a vacuum. Wave speed, frequency and length are related by the equation: **speed = frequency × wavelength**

The higher the frequency, the higher the energy.

The graphic below shows how the spectrum has been divided into seven 'types' according to use.

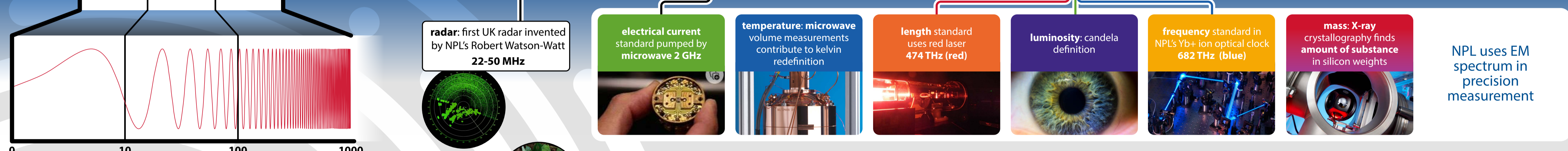


EM Spectrum
USING IT

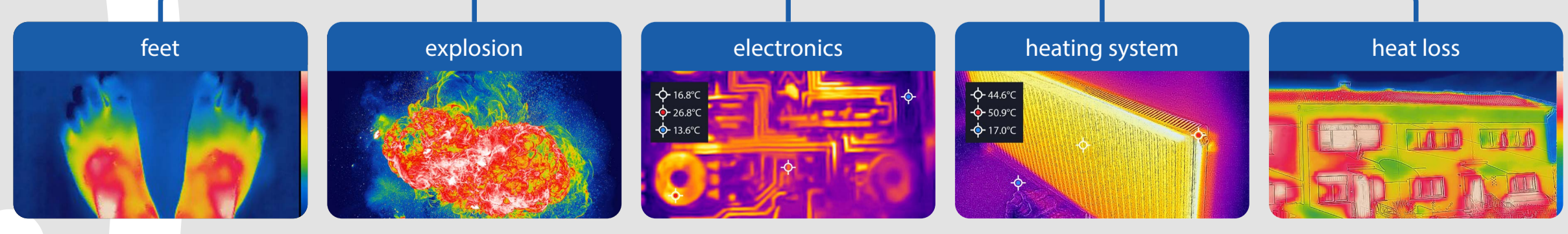


MYTH BUSTER!
Cosmic rays are **not** EM radiation but high energy particles

EM Spectrum
MEASURING WITH IT



Did you know? The National Physical Laboratory (NPL) evaluates the power of EM sources, the responsivity of EM detectors and uses many forms of the spectrum in high precision measurement.



NPL
npl.co.uk

The values used are correct at the time of going to press

© NPL Management Ltd. 2023. 12/23/2323
The information on this page is for general information only. It is not intended to be used as a substitute for professional advice. The information is provided as a guide only and is not intended to be used as a substitute for professional advice. The information is provided as a guide only and is not intended to be used as a substitute for professional advice.